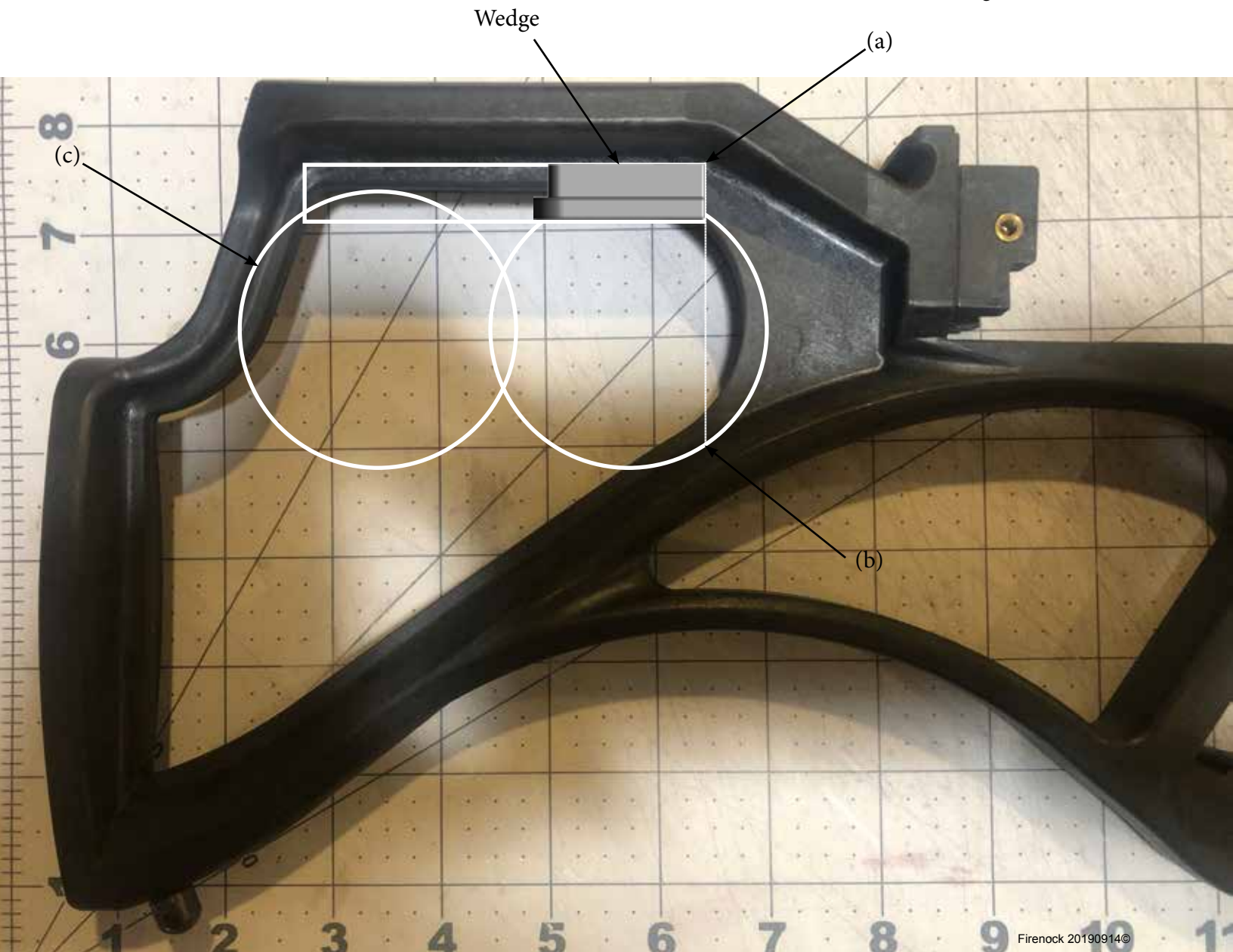


AeroCrank Cutout Template for Scorpyd™ One Piece Stock

The areas marked within the white circle and rectangle in the diagram below are to be removed in order to install an AeroCrank onto a Scorpyd one-piece stock. The easiest way does that with a wood file, then with a metal file, and finally with 400 grit sandpaper and water to get the best finish.

- 1) The diagram below shows and list the sequence of removing material. Total three areas (a, b, and c)
 - a) Use this corner
 - (a) as a reference, when start cutting and removing material. It should be at least 75mm in length minimum from point (a) to back of the stock.
 - (b) A circular cutout of no less than 52mm/2" in diameter with the edges touching where the arrow is (b) arrow is pointing at.
 - (c) Another circular cutout of no less than 52mm/2" in diameter with the edges touching where the (c) arrow is pointing at.
- 2) Base on the reference (a) corner, measure two points (5.8mm/15/64" and 21.5mm/27/64") on the top side of the stock which two 1/4" holes need to be drilled. Use two 1/4"-28 screws to fasten the wedge to the stock.



Firenock 20190914©